

Installation Guide

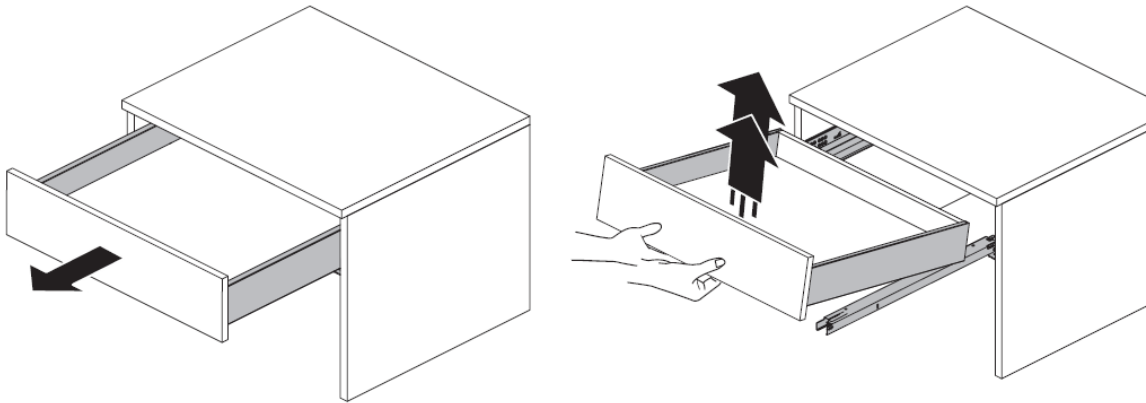
Drawer Lighting Pack

Important Information

- Read the instructions carefully.
- Ensure product contents are complete.
- It is recommended that a technically competent installer undertakes installation.
- Care should be taken when drilling to avoid any hidden wires or pipes.
- Installation of the lighting pack is best carried out with the drawer runner removed and the cabinet away from the wall.
- When the drawer is opened and the battery pack senses movement, the light strips will stay illuminated for 30 seconds and then switch off.

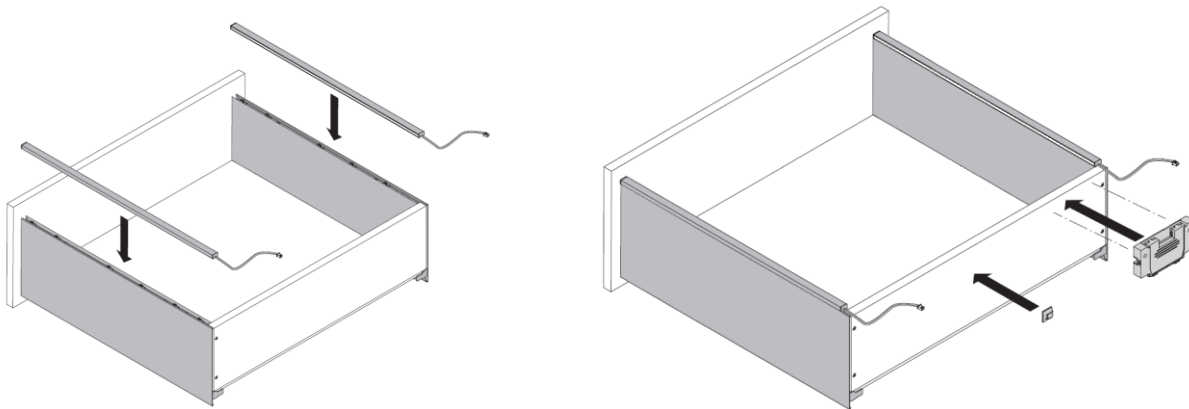
Installation

Remove the drawer box from the cabinet. Pull the drawer out to its full extension and lift it upwards away from the drawer runners.



Remove the cover cap strips from the top of the drawer box sides by carefully pulling them upwards.

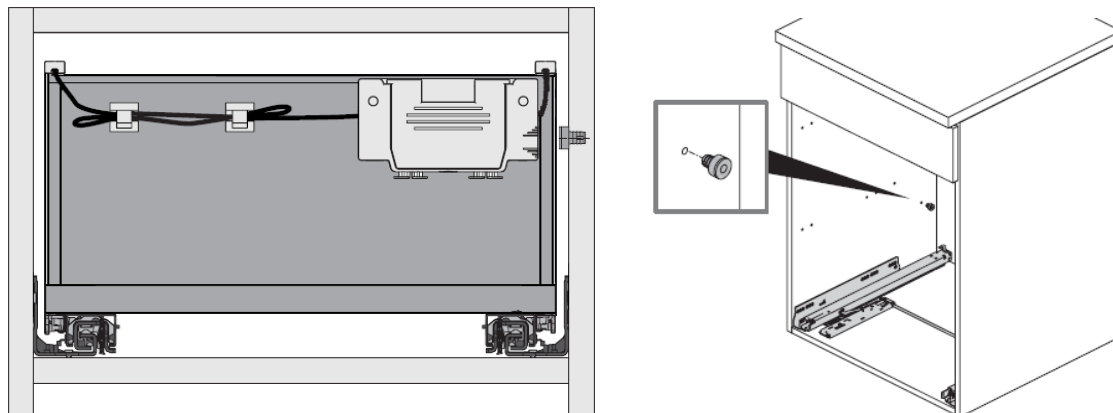
Clip the lighting strips onto the drawer box sides ensuring that the cables are at the rear of the drawer box.



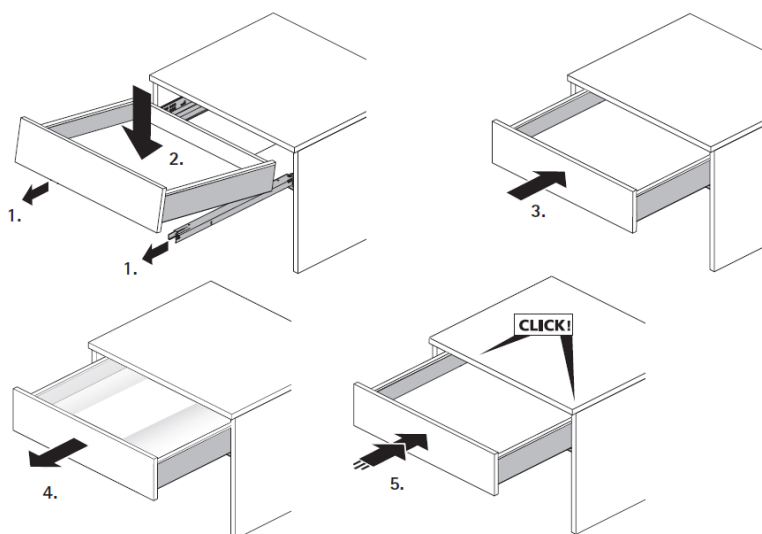
Screw the battery pack in its holder onto the rear of the drawer box. The battery pack must be fitted flush to the top of the drawer box and as far over to the right of the drawer box as possible. A spacer is included if it is required to move the battery box further away from the drawer back.

Plug the cables from the light strips into the battery pack. It may be necessary to use the supplied extension cable between the light strips and the battery pack. Stick the cable clips onto the rear of the drawer box to hold the cables in position. For drawers with a waste cutout, route the cables around the cutout.

Screw the magnetic sensor to the gable inside the unit. It may be necessary to remove the plastic grommet and screw from the sensor and use the supplied woodscrew instead. To determine the best position, refit the drawer box and view the cabinet from the rear. Fit the sensor so that it is level with the moulded sensor marks on the battery pack holder. The sensor must be positioned so that it lines up with the battery pack when the drawer is closed.



Fit the drawer box back into the cabinet. Pull the drawer runners out to their full extension. Place the drawer box on to the drawer runners. Push the drawer closed, open it and close it again until you hear the drawer box click into position.



Care & Maintenance

When the battery is low, remove the pack from the rear of the drawer box. The battery will lift out of its holder vertically and can then be recharged using the supplied cable. When fully charged, push the battery pack back into position in its holder.

Troubleshooting

Light will not switch on

Check the battery pack is fully charged
Ensure that the sensor is in the correct position and adjacent to the sensor on the battery pack holder.
Battery pack holder fitted too far away from the sensor.