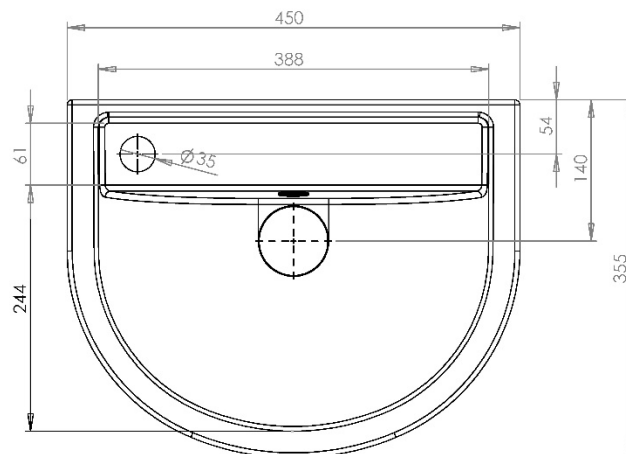
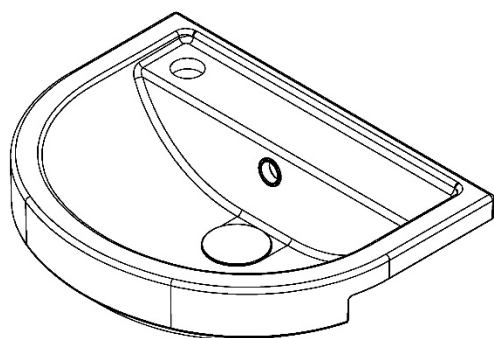
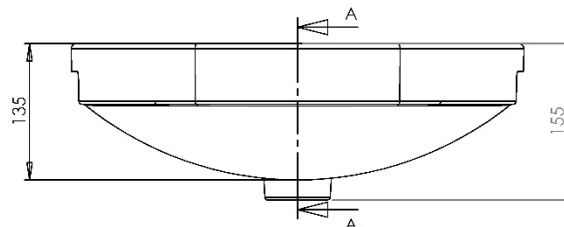
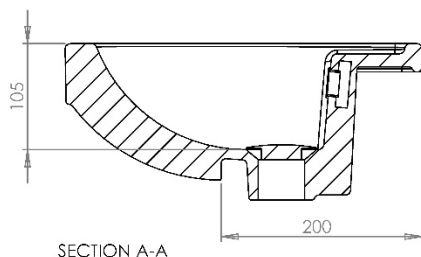


QUANTUM ROUND | QUANTUM ROUND CLOAKROOM SEMI-RECESSED WASHBASIN 1TH

QRBASRCL45W1TH



All dimension in mm. Please check dimensions prior to installation as they can vary due to manufacturing tolerances.

Product Details

Type:	Semi-Recessed Space Saving Basin
Width:	450
Depth:	355
Height:	135
Product Weight*:	7.25Kg
Tolerances:	Upto 2%
Guarantee Period:	Lifetime (For Domestic Use) 1 Years (For Commercial Use)

Product Specification

Material:	Ceramic
Integrated Overflow:	Yes
Type of Waste Required:	Slotted
Quantity of Tap Holes:	1
Tap Position:	Left
Standards:	BS EN 31 BS EN 14688

*Product Weight includes packaging.

Features

- Space Saving

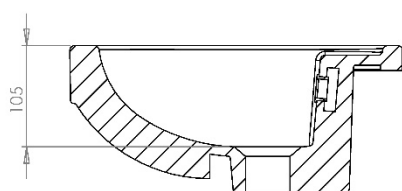
Additional Documentation

Additional Documentation available on our website www.utopiagroup.com

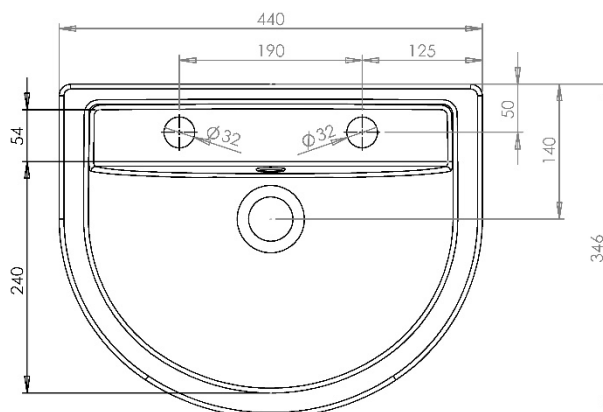
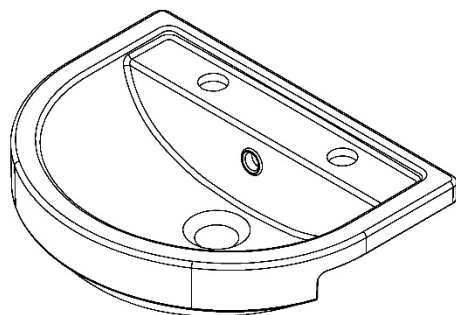
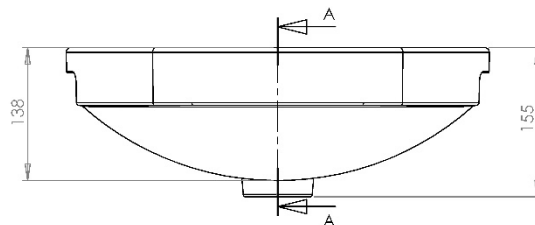
Every effort has been made to ensure that the information provided on this document is correct at the time of creation. Finally, Utopia Furniture Ltd reserve the right to alter materials and specifications in line with continuing programme of production and service development.

QUANTUM ROUND | QUANTUM ROUND CLOAKROOM SEMI-RECESSED WASHBASIN 2TH

QRBASRCL45W2TH



SECTION A-A



All dimension in mm. Please check dimensions prior to installation as they can vary due to manufacturing tolerances.

Product Details

Type:	Semi-Recessed Space Saving Basin
Width:	440
Depth:	346
Height:	138
Product Weight*:	7.25Kg
Tolerances:	Upto 2%
Guarantee Period:	Lifetime (For Domestic Use) 1 Years (For Commercial Use)

Product Specification

Material:	Ceramic
Integrated Overflow:	Yes
Type of Waste Required:	Slotted
Quantity of Tap Holes:	2
Tap Position:	See Drawing
Standards:	BS EN 31 BS EN 14688

*Product Weight includes packaging.

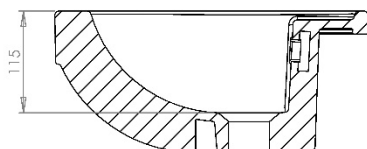
Features

- Space Saving

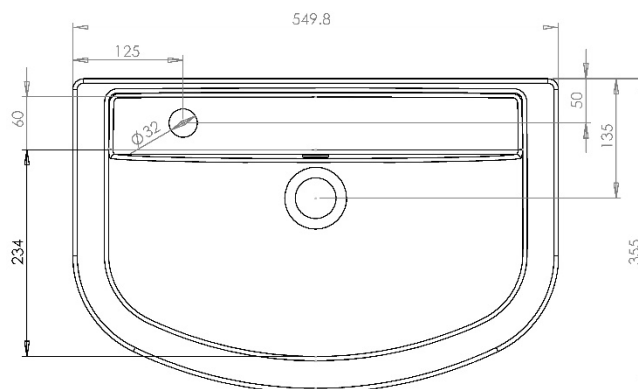
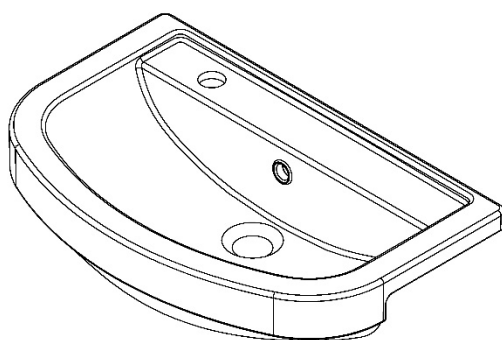
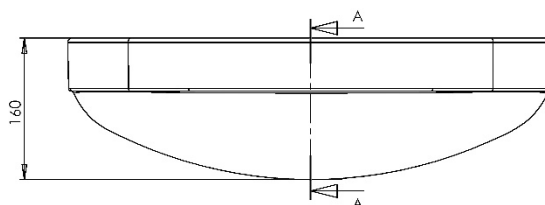
Additional Documentation

Additional Documentation available on our website www.utopiagroup.com

Every effort has been made to ensure that the information provided on this document is correct at the time of creation. Finally, Utopia Furniture Ltd reserve the right to alter materials and specifications in line with continuing programme of production and service development.

QUANTUM ROUND | QUANTUM ROUND SHORT PROJECTION SEMI-RECESSED WASHBASIN 1TH
QRBASRSP55W1TH


SECTION A-A



All dimension in mm. Please check dimensions prior to installation as they can vary due to manufacturing tolerances.

Product Details

Type:	Semi-Recessed Space Saving Basin
Width:	550
Depth:	355
Height:	160
Product Weight*:	9.65Kg
Tolerances:	Upto 2%
Guarantee Period:	Lifetime (For Domestic Use) 1 Years (For Commercial Use)

Product Specification

Material:	Ceramic
Integrated Overflow:	Yes
Type of Waste Required:	Slotted
Quantity of Tap Holes:	1
Tap Position:	Left
Standards:	BS EN 31 BS EN 14688

*Product Weight includes packaging.

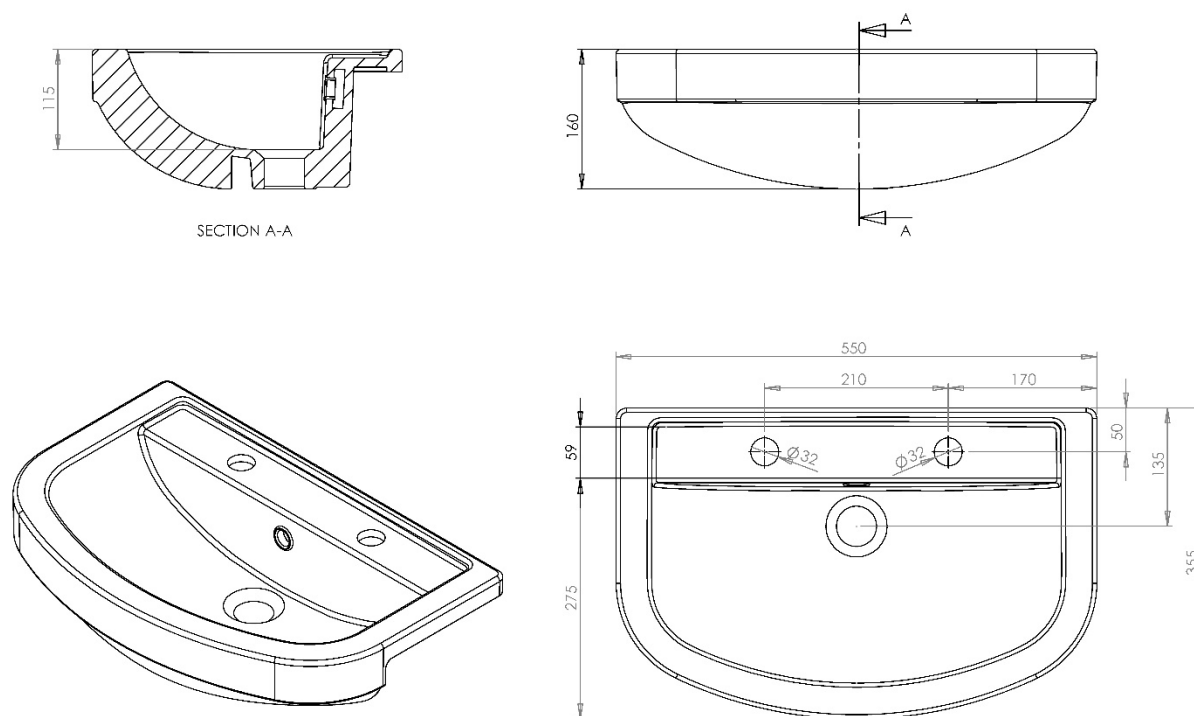
Features

- Space Saving

Additional Documentation

Additional Documentation available on our website www.utopiagroup.com

Every effort has been made to ensure that the information provided on this document is correct at the time of creation. Finally, Utopia Furniture Ltd reserve the right to alter materials and specifications in line with continuing programme of production and service development.

QUANTUM ROUND | QUANTUM ROUND SHORT PROJECTION SEMI-RECESSED WASHBASIN 2TH
QRBASRSP55W2TH


All dimension in mm. Please check dimensions prior to installation as they can vary due to manufacturing tolerances.

Product Details

Type:	Semi-Recessed Space Saving Basin
Width:	550
Depth:	355
Height:	160
Product Weight*:	9.65Kg
Tolerances:	Upto 2%
Guarantee Period:	Lifetime (For Domestic Use) 1 Years (For Commercial Use)

Product Specification

Material:	Ceramic
Integrated Overflow:	Yes
Type of Waste Required:	Slotted
Quantity of Tap Holes:	2
Tap Position:	See Drawing
Standards:	BS EN 31 BS EN 14688

*Product Weight includes packaging.

Features

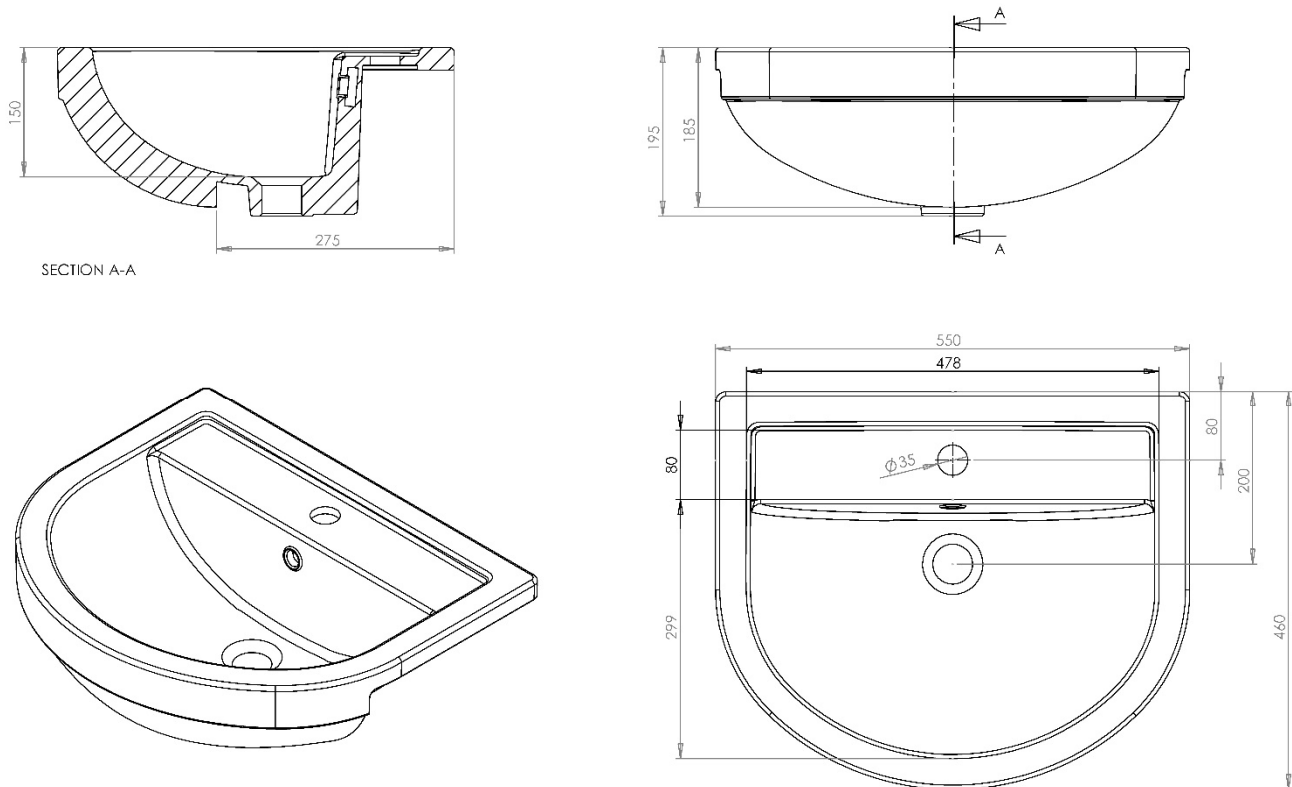
- Space Saving

Additional Documentation

Additional Documentation available on our website www.utopiagroup.com

Every effort has been made to ensure that the information provided on this document is correct at the time of creation. Finally, Utopia Furniture Ltd reserve the right to alter materials and specifications in line with continuing programme of production and service development.

QUANTUM ROUND | QUANTUM ROUND SEMI-RECESSED STANDARD WASHBASIN 1TH
QRBASR55W1TH



All dimension in mm. Please check dimensions prior to installation as they can vary due to manufacturing tolerances.

Product Details

Type:	Semi-Recessed Basin
Width:	560
Depth:	460
Height:	195
Product Weight*:	13.65Kg
Tolerances:	Upto 2%
Guarantee Period:	Lifetime (For Domestic Use) 1 Years (For Commercial Use)

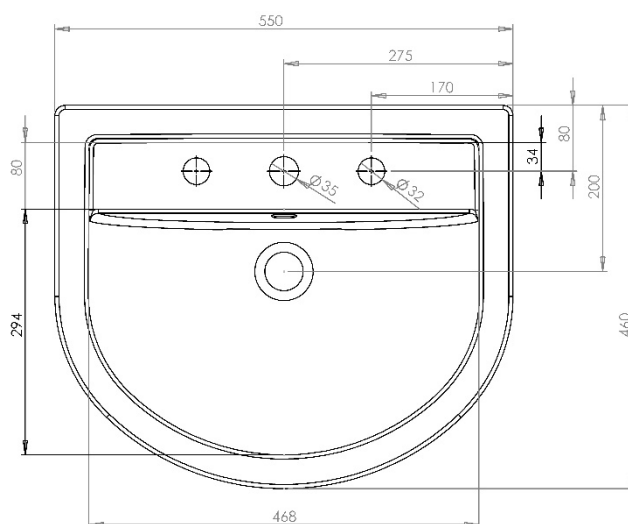
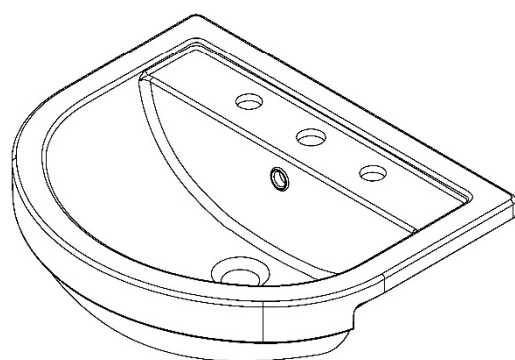
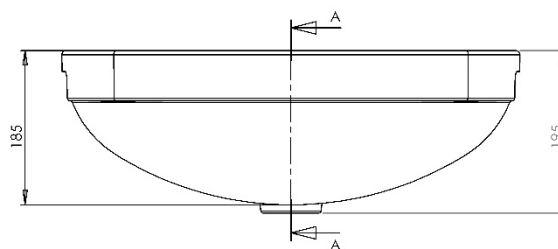
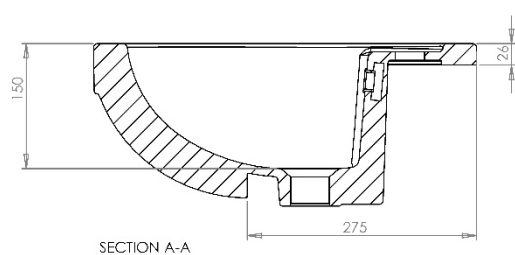
Product Specification

Material:	Ceramic
Integrated Overflow:	Yes
Type of Waste Required:	Slotted
Quantity of Tap Holes:	1
Tap Position:	Centre
Standards:	BS EN 31 BS EN 14688

*Product Weight includes packaging.

Additional Documentation

Additional Documentation available on our website www.utopiagroup.com

QUANTUM ROUND | QUANTUM ROUND SEMI-RECESSED STANDARD WASHBASIN 1TH
QRBASR55W1TH


All dimension in mm. Please check dimensions prior to installation as they can vary due to manufacturing tolerances.

Product Details

Type:	Semi-Recessed Basin
Width:	550
Depth:	460
Height:	160
Product Weight*:	13.65Kg
Tolerances:	Upto 2%
Guarantee Period:	Lifetime (For Domestic Use) 1 Years (For Commercial Use)

Product Specification

Material:	Ceramic
Integrated Overflow:	Yes
Type of Waste Required:	Slotted
Quantity of Tap Holes:	3
Tap Position:	See Drawing
Standards:	BS EN 31 BS EN 14688

*Product Weight includes packaging.

Additional Documentation

Additional Documentation available on our website www.utopiagroup.com

Every effort has been made to ensure that the information provided on this document is correct at the time of creation. Finally, Utopia Furniture Ltd reserve the right to alter materials and specifications in line with continuing programme of production and service development.