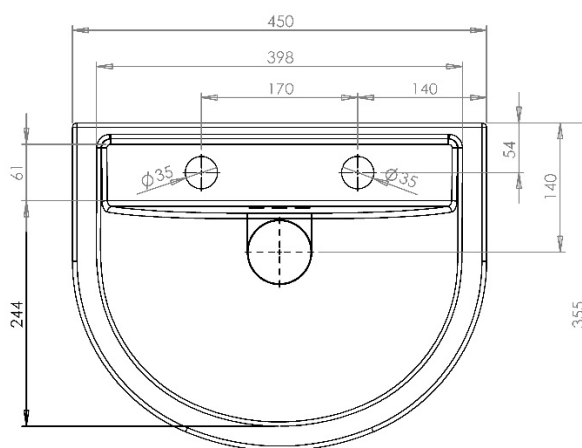
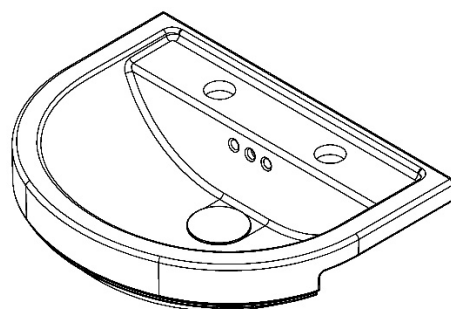
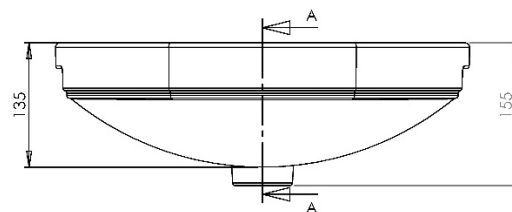
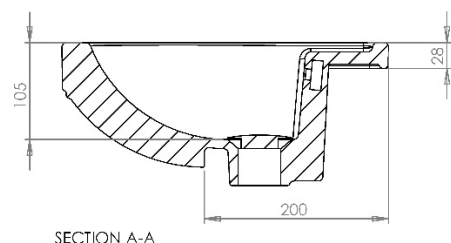


MONET ROUND | MONET ROUND CLOAKROOM SEMI-RECESSED WASHBASIN 2TH
MRBASRCL45W2TH


All dimension in mm. Please check dimensions prior to installation as they can vary due to manufacturing tolerances.

Product Details

Type:	Semi-Recessed Space Saving Basin
Width:	450
Depth:	355
Height:	135
Product Weight*:	6.3Kg
Tolerances:	Upto 2%
Guarantee Period:	Lifetime (For Domestic Use) 1 Years (For Commercial Use)

Product Specification

Material:	Ceramic
Integrated Overflow:	Yes
Type of Waste Required:	Slotted
Quantity of Tap Holes:	2
Tap Position:	See Drawing
Standards:	BS EN 31 BS EN 14688

*Product Weight includes packaging.

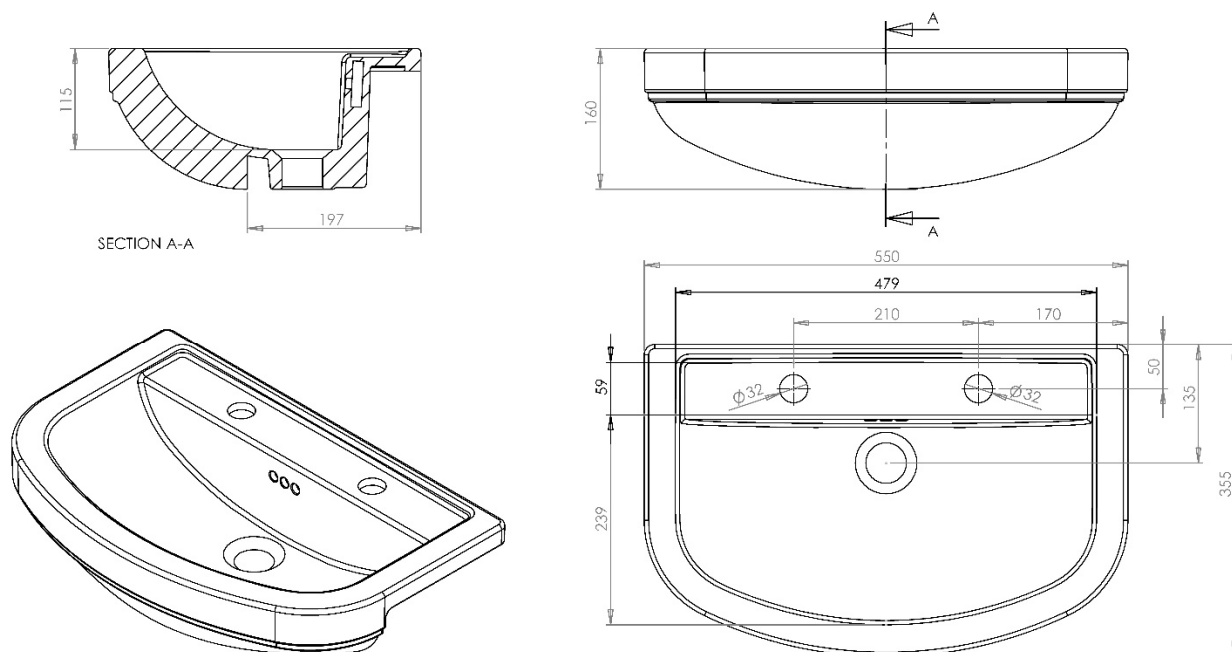
Features

- Space Saving

Additional Documentation

Additional Documentation available on our website www.utopiagroup.com

Every effort has been made to ensure that the information provided on this document is correct at the time of creation. Finally, Utopia Furniture Ltd reserve the right to alter materials and specifications in line with continuing programme of production and service development.

MONET ROUND | MONET ROUND SHORT PROJECTION SEMI-RECESSED WASHBASIN 2TH
MRBASRSP55W2TH


All dimension in mm. Please check dimensions prior to installation as they can vary due to manufacturing tolerances.

Product Details

Type:	Semi-Recessed Space Saving Basin
Width:	550
Depth:	355
Height:	160
Product Weight*:	10.15Kg
Tolerances:	Upto 2%
Guarantee Period:	Lifetime (For Domestic Use) 1 Years (For Commercial Use)

Product Specification

Material:	Ceramic
Integrated Overflow:	Yes
Type of Waste Required:	Slotted
Quantity of Tap Holes:	2
Tap Position:	See Drawing
Standards:	BS EN 31 BS EN 14688

*Product Weight includes packaging.

Features

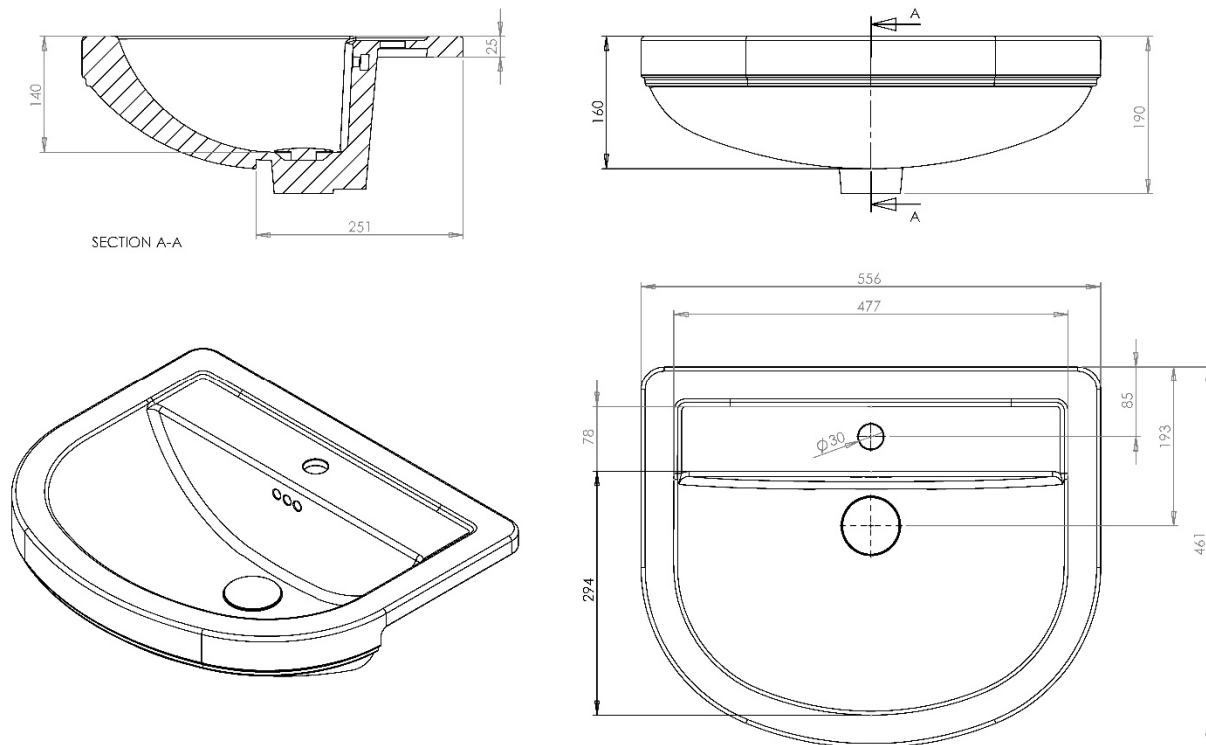
- Space Saving

Additional Documentation

Additional Documentation available on our website www.utopiagroup.com

Every effort has been made to ensure that the information provided on this document is correct at the time of creation. Finally, Utopia Furniture Ltd reserve the right to alter materials and specifications in line with continuing programme of production and service development.

MONET ROUND | MONET ROUND SEMI-RECESSED STANDARD WASHBASIN 1TH
MRBASR55W1TH



All dimension in mm. Please check dimensions prior to installation as they can vary due to manufacturing tolerances.

Product Details

Type:	Semi-Recessed Basin
Width:	556
Depth:	461
Height:	160
Product Weight*:	13.55Kg
Tolerances:	Upto 2%
Guarantee Period:	Lifetime (For Domestic Use) 1 Years (For Commercial Use)

Product Specification

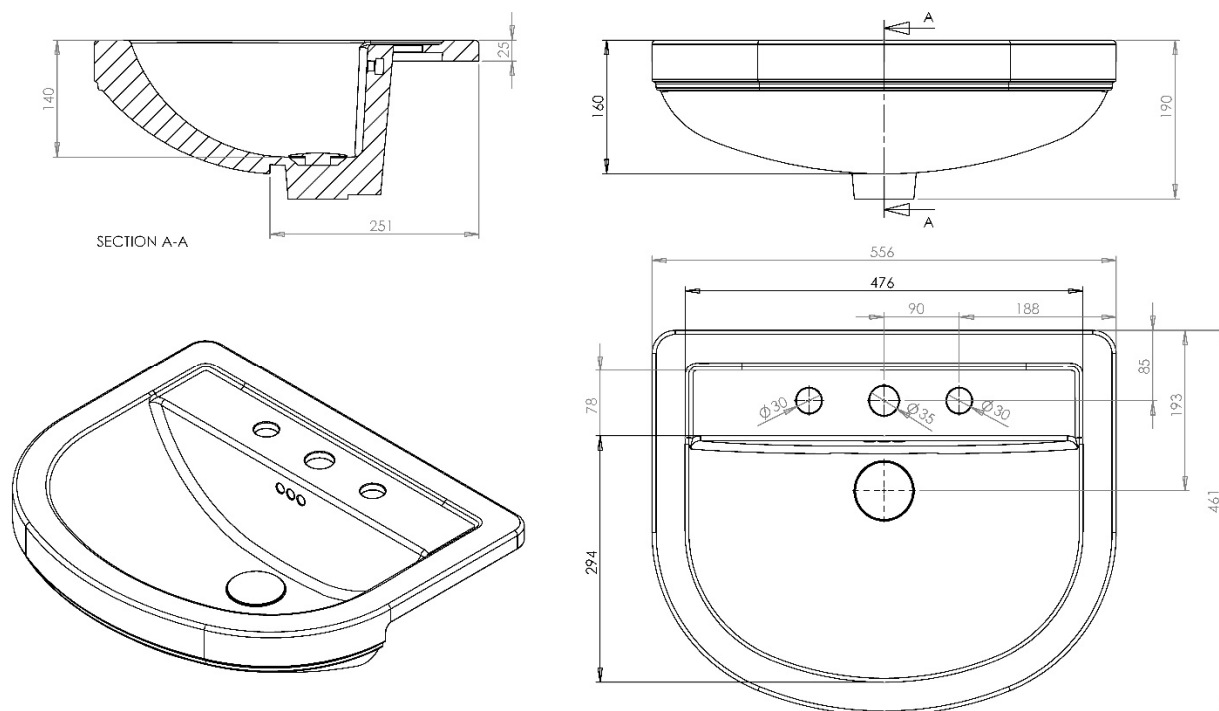
Material:	Ceramic
Integrated Overflow:	Yes
Type of Waste Required:	Slotted
Quantity of Tap Holes:	1
Tap Position:	Centre
Standards:	BS EN 31 BS EN 14688

***Product Weight includes packaging.**

Additional Documentation

Additional Documentation available on our website www.utopiagroup.com

Every effort has been made to ensure that the information provided on this document is correct at the time of creation. Finally, Utopia Furniture Ltd reserve the right to alter materials and specifications in line with continuing programme of production and service development.

MONET ROUND | MONET ROUND SEMI-RECESSED STANDARD WASHBASIN 1TH
MRBASR55W1TH


All dimension in mm. Please check dimensions prior to installation as they can vary due to manufacturing tolerances.

Product Details

Type:	Semi-Recessed Basin
Width:	556
Depth:	461
Height:	160
Product Weight*:	13.55Kg
Tolerances:	Upto 2%
Guarantee Period:	Lifetime (For Domestic Use) 1 Years (For Commercial Use)

Product Specification

Material:	Ceramic
Integrated Overflow:	Yes
Type of Waste Required:	Slotted
Quantity of Tap Holes:	3
Tap Position:	See Drawing
Standards:	BS EN 31 BS EN 14688

*Product Weight includes packaging.

Additional Documentation

Additional Documentation available on our website www.utopiagroup.com

Every effort has been made to ensure that the information provided on this document is correct at the time of creation. Finally, Utopia Furniture Ltd reserve the right to alter materials and specifications in line with continuing programme of production and service development.